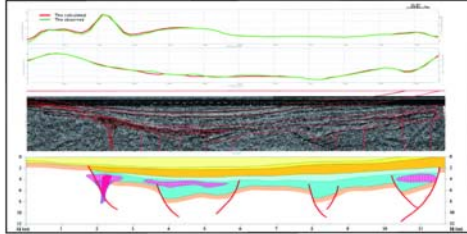
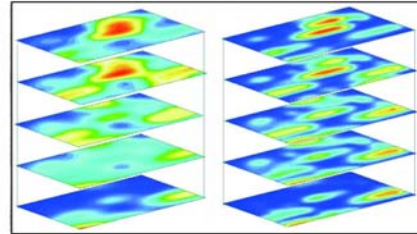


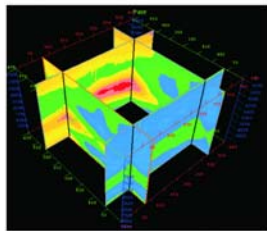
■ Processing



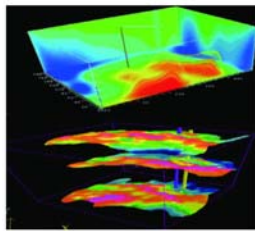
3D gravity formation-separation with constraint of seismic and logging data



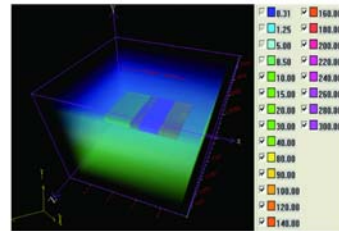
Processing and static corrections of 3D CEMP data



Fast cascaded Inversion of 3D CEMP data

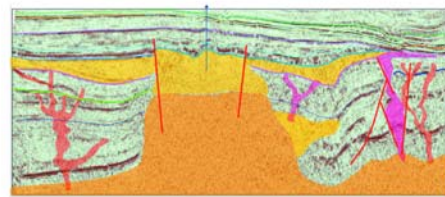
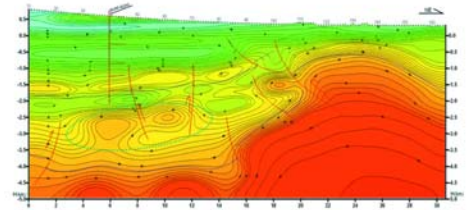


3D Inversion of Apparent Density and Susceptibility

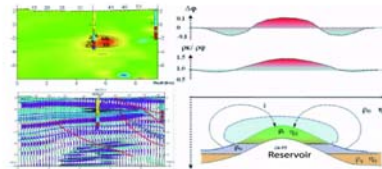


3D inversion of SBL data

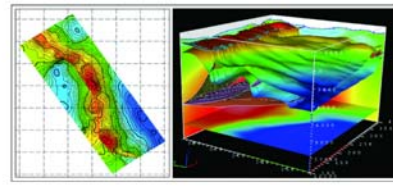
■ Interpretation



Pattern Recognition and Interpretation of Igneous Rocks with Cluster Coding based on gravity, magnetic, electromagnetic, and seismic data.



Hydrocarbon Detection and Monitoring by IPR Anomaly



Integrated 3D visualization interpretation with gravity, magnetic, electromagnetic, and seismic data on GeoEast



中国石油东方地球物理公司
BGP Inc. China National Petroleum Corporation