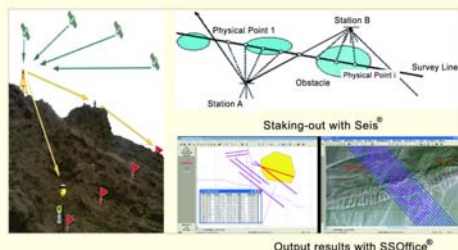


# PAI Mountain

An integrated solution for mountain seismic exploration

The PAI-Mountain sub-package is an integrated solution for mountain seismic. KLSeis®, GeoEast®, and VP3® software systems, as well as extra-heavy duty vibrators, truck-mounted and portable rigs, have enabled BGP to enhance its seismic capability operating in mountain areas with varying elevations, and to provide excellent services for many oil companies both at home and abroad.



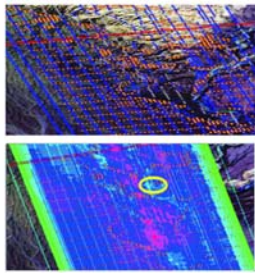
Staking-out based on Seis® and SSOoffice®



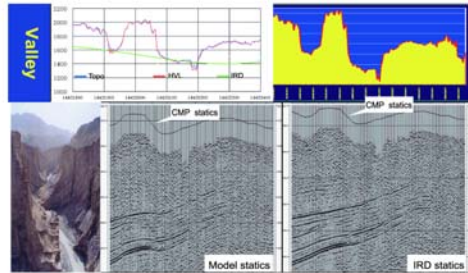
Multi-type source shooting



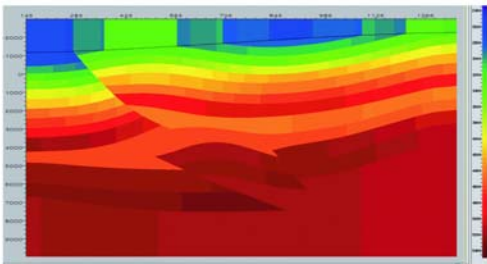
中国石油东方地球物理公司  
BGP Inc., China National Petroleum Corporation



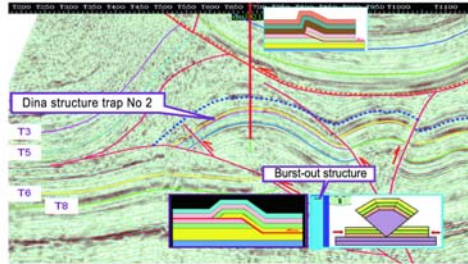
Irregular geometry design



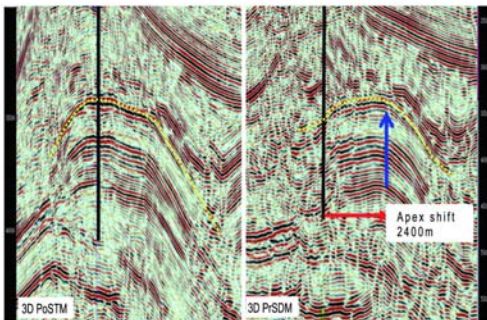
Intermediate reference datum statics



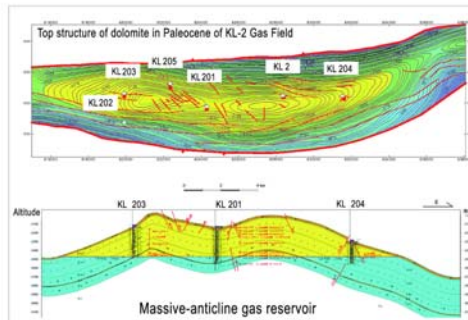
Velocity model for 3D PrSDM



Structure modeling



Undulated topography PrSDM



KL-2 Gas field is the first one discovered in Kuche mountain using PAI-Mountain, a major supplier for the West-East Pipeline Project.



中国石油东方地球物理公司  
BGP Inc., China National Petroleum Corporation